



GUARDIAN
automotive



PRODUCT UPDATES CATALOGUE

guardianauto.co.uk

light bars & beacons

LED LIGHT BARS

2ft | 3ft | 4ft options

- 12 - 24 volt
- SMD LEDs
- 4 Bolt Fixing
- 27 Flash Patterns
- Rated IP66
- Dimmable | Memory Function
- Polycarbonate UV Resistant Lens
- ECE R65, R10, EMC, CE, E, UKCA, CAP 168 Approved



AMB420



AMB421



AMB422



STRAIGHT
POWER LEAD



AMB420

162 x SMD LEDs
H.90mm W.215mm L.600mm

WIRED
CONTROLLER



AMB421

222 x SMD LEDs
H.90mm W.215mm L.900mm

WIRED
CONTROLLER



AMB422

282 x SMD LEDs
H.90mm W.215mm L.1200mm



4 BOLT FIXING

LED LIGHT BARS

2ft | 4ft options

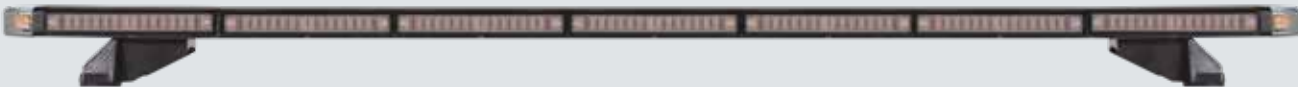
- 19 Flash Patterns
- Rated IP67
- Dimmable Function
- Low Profile Design
- Wired Controller
- ECE R65, R10, E Approved



AMB240



AMB241



PART NO.	DIMENSIONS	FIXING	VOLTAGE	LED
AMB240	582mm (2ft)	4-Bolt	10-30	132
AMB241	1218mm (4ft)	4-Bolt	10-30	260



WIRED
CONTROLLER

R65
RATED

REDTRONIC EVOLVE LIGHT BAR - 550mm (2ft)

AMB309

64 x LEDs | 4 Bolt Fixing

AutoDim/Photosensor included as standard

Replaceable lens sections

5mm ultra strong UV stabilised polycarbonate lens

Silicone optics offering wide angle & intense light output

ECE R65, R10, CISPR25 Class 3, CAP 168 Approved

H.100 - 118mm W.280mm L.550mm (Height adjustable)

REDTRONIC



**IP69K RATED
WATER RESISTANT**



**x13
FLASH PATTERNS**



**LOW DRAW
EV FRIENDLY**



**R65
RATED**



REPLACEABLE SECTIONS

MINI AMBER LED BEACON RANGE

IP66



12-24v



8 x SMD LEDs

15 watt

ECE R65, R10, EMC,
CE, E, RoHS, UKCA
Approved



AMB944



AMB946



AMB947

**R65
RATED**

**UK
CA**

CE



SUCTION MOUNT FOR LIGHT BARS & WORK LAMPS

VAC1

Suction mount for
non metallic surfaces

Speed rating max 30mph

Site use only



For use with:

Light Bars (up to 2ft) & Single Bolt Work Lamps

hand lamps & torches

RECHARGEABLE LED HAND LAMPS

HL60

500 LUMENS  UP TO 8 HOUR RUN TIME 

9 x SMD LEDs (Main) | 1 x SMD LED (Spot)
500 Lumens (Main) | 200 Lumens (Spot)
Magnetic pocket clip
H.181mm W.35mm D.34mm



HL61

1000 LUMENS  UP TO 12 HOUR RUN TIME 

6 Light modes
27 x SMD LEDs (Main) | 1 x SMD LED (Spot)
1000 Lumens (Main) | 200 Lumens (Spot)
90° Foldable rear stand and hook
H.206mm W.57mm D.43mm

COUNTER DISPLAY AVAILABLE

HL61CD

Supplied with 12 units



LED HAND LAMP WITH FLEXIBLE INSPECTION LIGHT

HL62

1600 LUMENS  UP TO 16 HOUR RUN TIME 

15 watt COB LED (Main) | 3 watt SMD LED (Spot)
Lumens - Main 1600 (100%)
360° hook | Flexible inspection light
H.173mm W.78mm D.40mm

COUNTER DISPLAY AVAILABLE

HL62CD

Supplied with 12 units



FLOOD & SPOT 360° LED HAND LAMP

HL63

1000 LUMENS  UP TO 9 HOUR RUN TIME 

1 x 10 watt COB LED | 1 x 6 watt SMD LED
Lumens 1000 COB | 600 SMD
360° rotating body | Rated IP54
USB-A Power bank | USB-C charging cable included
H.92mm W.88mm D.58mm



SLIMLINE LED HAND LAMP

HL64

360 LUMENS  UP TO 7 HOUR RUN TIME 

3 Light modes - High, low, strobe | 3 watt COB LED
360 Lumens (High 100%) | 180 Lumens (Low 50%)
Rated IP54 | Hanging hook
USB-C charging cable included
H.250mm W.32mm D.11mm

ULTRA THIN PROFILE



LED HAND LAMP WITH POWER BANK

HL65

1000 LUMENS  **UP TO 15 HOUR RUN TIME** 

1 x COB LED (Main) | 1 x SMD LED (Spot)
1000 Lumens (Main) | 200 lumens (Spot)
USB-C charging cable included
Hanging hook | Power bank
H.150mm W.52mm D.25mm



COUNTER DISPLAY AVAILABLE

HL65CD

Supplied with 12 units



LED MODULAR HAND LAMP STATION

HL66

2100 LUMENS  **UP TO 16 HOUR RUN TIME** 

8 watt COB LED
90° Tilt magnetic base station | 180° Magnetic light units
All three hand lamps charged simultaneously through magnetic charging ports
IP65 Rated | Impact Rating IK07
Dual charging via USB-C cable or dock
H.114mm W.240mm D.70mm



180° ROTATION



head torches

HT7

350 LUMENS  **UP TO 6 HOUR RUN TIME** 

5 Light modes
1 x 5 watt COB LED strip | 350 Lumens
1 x 3 watt CREE LED | 150 Lumens
Rated IP54 | Sensor activation
USB-C charging cable included



COUNTER DISPLAY AVAILABLE

HT7CD

Supplied with 12 units



RIL0115

115 LUMENS  **UP TO 5.5 HOUR RUN TIME** 

3.7v DC
Amps output – battery capacity 1000mAh
1x rechargeable Lithium-ion battery included
115 Lumen output (High) | 50 lumen output (Low)
Rated IP42 and impact rating IK07



OSRAM

vehicle lighting

LED MARKER LAMPS

IP67  12-24v 

2 x Eagle Eye LEDs
2 Bolt Fixing
450mm Cable Connection
L.82mm H.26mm D.19mm (7mm Fitted)



ML75R

● Rear Marker Lamp

ML75A

● Side Marker Lamp

ML75W

○ Front Marker Lamp



CE

LED MARKER LAMPS

IP67  12-24v 

1 x SMD LED | Push Fit
Cable Connection
ABS housing with PC lens
ECE R10, CE, E, RoHS Approved
D.19mm Dia Ø 27mm



- **ML78R** - Rear Marker
- **ML78A** - Side Marker
- **ML78W** - Front Marker

R10
RATED

CE

LED MARKER LAMP

ML76

IP65  12-24v 

8 x LEDs
2 Bolt Fixing
H.81mm W.98mm D.41mm



R10
RATED

CE

MAGNETIC LED RECHARGEABLE WARNING LIGHT DOUBLE FLASH

IP67  12-24v  UP TO 7 HOUR RUN TIME 

LED32A

LED32R



12 x SMD LEDs | 5 watt
Up to 7 hours run time from 3-4 hours charge
Magnetic fixing
Dual USB charging cable
Quick double flash pattern
L.110mm W.102mm D.68mm

KIT INCLUDES: 2 x warning lights | 1 x USB dual voltage
Vehicle socket | 1 x dual USB charging cable | Carry case

R65
RATED

R10
RATED

UK
CA

CE

LED MARKER LAMPS

IP65  12-24v 

8 x LEDs
2 Bolt Fixing
Clear, Red, Amber Lens
L. 172mm



ML77LH

Left Hand End Marker

ML77RH

Right Hand End Marker

R10
RATED

CE

LOW PROFILE 3 FUNCTION REAR COMBINATION LIGHT

LED26ST



3 FUNCTIONS

Stop | Tail | DI

6 x 1.5 watt SMD LEDs
2 Point or Self Adhesive Fixing
L.131mm W.32mm D.7mm



R10
RATED | CE

LED WARNING LIGHTS



5 x LEDs | 15 watt
10 Flash Patterns
2 Point Fixing
L.60mm W.60mm D.7mm



● **LED31A** - Amber

● **LED31R** - Red

● **LED31W** - White

R65
RATED | R10
RATED | UK
CA

LED WARNING LIGHTS



18 x LEDs | 10 Flash Patterns
2 Point Fixing & 3M Self Adhesive
L.130mm W.67mm D.7mm

● **LED30A** - Amber

● **LED30R** - Red

● **LED30W** - White



DUAL COLOUR



ALTERNATING
FLASH

● **LED30AW** - Amber & White

● **LED30RA** - Red & Amber

R65
RATED | R10
RATED | UK
CA | CE



INFINITY STEALTH PLATE

REDTRONIC

RIF1



Ultra bright latest generation LEDs
7 Selectable Flash Patterns
CAP168/ICAO airport flash
Night and day (dim mode)
H.132mm W.520mm D.24mm

R65
RATED | R10
RATED

LED DUAL MOUNT WORK LAMP

WL101



15 x 3 watt EPISTAR LEDs
Lumens 6300 R | 4500 E
Flood beam
H.118 mm W.150 mm D.45 mm
(Horizontal Orientation)



R10
RATED

LED REAR LAMP WITH INTEGRAL HAZARD WARNING

RL129



20 x SMD LEDs
LEDs Stop x 3 | Tail x 3 | DI x 6
Reverse x 2 | Warning strobe x 6
H.58mm W.124mm D.82mm

5 FUNCTIONS

Stop | Tail | Reverse | DI | Warning Strobe



R65
RATED | R10
RATED | CE

cctv & safety systems



7"

1080P
FHD

12-24v



CCTV24HD

2 Camera Inputs with Mirror or Normal Switching
Remote Control

M: H.115mm W.172mm D.49mm

C: H.77mm W.86mm D.65mm

Monitor MON24HD | Camera CAM37 | Full Fitting Kit



5"

1080P
FHD

12-24v



CCTV23HD

3 Camera Inputs with Mirror or Normal Switching
Audio Function

M: H.117mm W.157mm D.30mm

C: H.78mm W.84mm D.76mm

Monitor MON23HD | Camera CAM30 | Full Fitting Kit



3.2"

4K
1080p

12-24v



4K 1080P FULL HD DASH & REAR CAMERA

DC1

DASH CAM

170° Angle Lens

Supports up to 128GB Micro SD

Supplied with a Complimentary 32GB Micro SD

Parking Mode (via optional DC1 lead)

REAR VIEW CAM

Night Vision | 140° Angle Lens

Dash Cam

H.57mm W.85mm D.48mm

Rear View Cam

H.37mm W.59mm D.32mm



PLAYBACK &
SETTINGS VIA APP



CCTVHD4

7"

1080P
FHD

12-24v

4 x 1080p HD Cameras
Monitor: H.113mm W.195mm D.27mm

Monitor MON27QHD

Camera CAM30, CAM35, CAM33S x2 | Full Fitting Kit

WITH RECORDING

CCTVHDR4

4 Channel Recorder up to 1TB hard drive and 128GB SD card capacity
500GB HARD DRIVE INCLUDED



Recorder DVR4HD | Monitor MON27HD | Camera CAM30, CAM35, CAM33S x2 | Full Fitting Kit

WITH EXTRA REAR CAMERA

CCTVHDR5

8 Channel Recorder up to 1TB hard drive and 128GB SD card capacity
500GB HARD DRIVE INCLUDED



Recorder DVR6HD | Monitor MON27HD | Camera CAM30 x2, CAM35, CAM33S x2 | Full Fitting Kit

WITH LEADS FOR ARTICULATED VEHICLES

CCTVHD5TR

8 Channel Recorder up to 1TB hard drive and 128GB SD card capacity
500GB HARD DRIVE INCLUDED



Recorder DVR6HD | Monitor MON27HD
Camera CAM30 x2, CAM35, CAM33S x2 | Leads LEAD10HD | Full Fitting Kit

MULTI FREQUENCY ALARMS

RA30

IP67 10-80v

4 Bolt Fixing
"White Noise" and Tonal Alarm
Night Silent function
W.102mm H.68mm D.36mm

R10
RATED

UK
CA

CE



RA31

Self adjusts to surrounding noise
- 87dB | 97dB | 107dB



87dB | 97dB | 107dB
OPTIONS

NIGHT SILENT
FUNCTION

booster packs

HEAVY DUTY BOOSTER PACKS 12/24V

12 or 24v 

12 or 24 volt - Automatic Voltage Detection
LED Emergency Light - 3 Modes: 100% | Strobe | SOS
Portable Power Bank
Spark Proof | Over Current | Reverse Polarity Protection
USB-A Output x2 | USB-C Charge (5v 2a)
Quick Charge Via Dc (29v 5a) | 600mm Lead Length
CE, EMC, UKCA, RoHS Approved



**DUAL FUEL
START UP TO 13L**



**POWER BANK
& LIGHT**



**2.5 HOUR
RAPID CHARGE**



**2500 AMP
PEAK OUTPUT**



**9 HOUR
CHARGE TIME**



**7000 AMP
PEAK OUTPUT**

JP6

L.280mm W.189mm H.157mm

JP7

L.300mm W.180mm H.240mm



**UK
CA** | **CE**

12V BOOSTER PACK

JP8

12 VOLT 

**COMPACT &
POWERFUL**

Peak power 1350 amps
Jump starts vehicles up to 6.5L Petrol | 3.5L Diesel
Multi functional USB power bank for phones and other portable devices
LED Emergency light



**DUAL FUEL
START**

**UK
CA** | **CE**



12V JUMP & CHARGER

JP9

12 VOLT 

**JUMP STARTER, BATTERY TESTER
& CHARGER ALL IN ONE**

Peak power 4250 amps
Jump starts vehicles up to 10L Petrol | 8L Diesel
Multi functional USB power bank for phones and other portable devices
Charges 6v & 12v Lead-Acid Batteries & 12v Lithium Batteries
In-depth Diagnostics for 12v Batteries, including battery health assessments, cranking tests & charging tests



**ALTERNATOR
TEST**



**BATTERY
TEST**



**DUAL FUEL
START**



**UK
CA** | **CE**

30 AMP SMART CHARGER

12 or 24v  **RSCP3024**

Up to 30A continuous charge for battery support power supply function
Rapid recharge in minutes
Variable charging rates 5/10/20/30A for slow or rapid recharge
Battery and alternator diagnosis to check potential starting problems and cranking ability
Pre-charge health check for your engine system
H.83mm W.233mm D.193mm



50 AMP SMART CHARGER

12 or 24v  **RSCP5024**

1500 watts | Up to 50A Continuous charge
Rapid recharge in minutes
Variable charging rates 12/24V at 5/10/30/50A
Battery and alternator diagnosis
Pre-charge health check for your engine system
H.100mm W.360mm D.255mm



1000A JUMP STARTER

12v  **POWER BANK**  **RPPL1000**

1500 Peak Amps / 1000 Starting Amps
Starts batteries as low as 0 volts
Jump starts ALL Petrol engines and up to 10L Diesel Engines
Fast charging with PD60W input
H.279mm W.189mm D.76mm



PROFESSIONAL AIR COMPRESSOR

12v  **RAC900**

Max pressure reading (PSI) 100
7m extendible airline hose that extends to the full length of long wheelbase vehicles
H.161mm W.186mm D.93mm

Professional High Power Air Compressor is up to three minutes faster than a standard compressor. It has proven performance used by breakdown professionals.



CORDLESS INFLATOR

RECHARGEABLE  **RTC4000**

12v DC or 7.4v DC Input
3-piece adaptor kit for small inflatables such as sports equipment and Presta bike valves
Programmable pressure setting with auto-stop function
H.150mm W.95mm D.60mm



TYRE INFLATORS

12v 

Inflates a 13" tyre in 4 minutes
60cm air hose allows easy access | Bright LED light
3 meter power cable with internal storage
3 piece valve adaptor kit securely stored inside the inflator
H.157mm W.220mm D.109mm

RT110T

RT1120T

DIGITAL DISPLAY




HEAVY DUTY DIGITAL TYRE INFLATOR

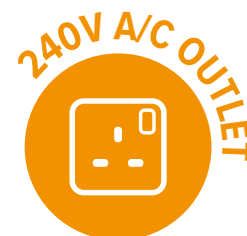
12v  **RAC820**

Max pressure reading (PSI) 75
Inflates 4x4 tyre in 5 minutes and a car tyre in just 2.5 minutes
Long cable 3.5m - reaches tyres easily around the vehicle
Displays readings in PSI, KPA, BAR
H.160mm W.87mm D.210mm

Comes with a three-piece adaptor set for inflating sports balls, bikes and other inflatables and a case for tidy storage



inverters



12 OR 24V PURE SINE INVERTERS

P12-600

12v

Continuous Output 600 watt / Peak 1200 watt
Single 240v A/C Outlet
L.240mm W.150mm H.70mm

P12-1000

12v

Continuous Output 1000 watt / Peak 2000 watt
Single 240v A/C Outlet
L.360mm W.150mm H.70mm

P24-1000

24v

P12-1500

12v

Continuous Output 1500 watt / Peak 3000 watt
Twin 240v A/C Outlet
L.350mm W.220mm H.88mm

P24-1500

24v

P12-2000

12v

Continuous Output 2000 watt / Peak 4000 watt
Twin 240v A/C Outlet
L.360mm W.220mm H.90mm

P24-2000

24v

P12-3000

12v

Continuous Output 3000 watt / Peak 6000 watt
Twin 240v A/C Outlet
L.422mm W.220mm H.148mm

P24-3000

24v



**SOFT
START**



**USB
CHARGER**



**LOW VOLTAGE
ALARM**



**CE | EMC
APPROVED**



REMOTE CONTROL

PRC1

Helps to cut down on needless battery drain associated with standby current.

ON/OFF Switch

For use with this P Range

3 metre cable

4 Point Fixing

Cut Out: 85mm x 50mm

L.100mm H.70mm D.30mm



**PRODUCT
DETAILS**

ALFATRONIX WIRELESS MOBILE PHONE CHARGER

9-32v  **AL4**

2A internal fuse to protect against catastrophic failure
Foreign object detection & activation
Phone communicates every second to establish correct charge
LED to confirm correct operation
IP65 Rated
W.65mm H.56mm D.14mm



UK
CA | CE

USB-C CHARGE ADAPTOR

9-32v  **USB2C**  USB-C

Output: 5 volt 3 Amps
Apple | Android Compatible
UKCA, CE, E Approved
W.112mm H.24mm D.14mm



This charger is for 'behind the scenes' applications and therefore has no interface

UK
CA | CE

USB-A AVAILABLE

USB2  USB-A
Output: 5 volt 2.1 Amps

ALFATRONIX WIRELESS & USB PHONE CHARGER

9-32v  **AL5**

Approved to EN50498, EN50155, ISO7637-2. CE, UKCA, E Approved
Nominal 5W; USB Charger: Dual A & C 3.6A
Combined Wireless and USB 'A' & 'C' Charger
Phone communicates every second to establish correct charge
Foreign object detection & activation
Convenient wide input of 9-32Vdc in one standard casing
LED to confirm correct operation
The casings are made from V0-rated (self-extinguishing) high impact polycarbonate
W.187mm H.122 D.26mm



UK
CA | CE

USB POWER ADAPTER SOCKETS

9-32v 

Output 5 volt
IP65 Approved
Apple | Android Compatible
Blue LED Indicator
Ø 37mm x 33mm
Hole Ø 30mm, Depth 23mm



USB5C  USB-C
Output: 5 volt 3.0 Amps



USB3C  USB-C x2
Output: 5 volt 3.0 Amps



USB3AC  USB-A
 USB-C
Output: 5 volt 3.6 Amps

USB-C POWER ADAPTOR MOUNTING POD

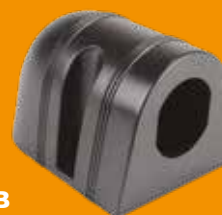
USBC

Table mounting pod for 2 x USB chargers
Suitable for use with the USB 'A' & 'C' dual output or 'C' single output
W.103mm H.45mm D.88mm



For use with:
USB3 | USB3C | USB3AC | USB5 | USB5C

SINGLE MOUNTING POD AVAILABLE

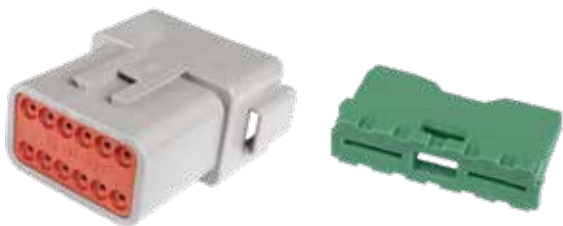


USBB

For use with:
USB3 | USB4 | USB5 | USB6

workshop consumables

DEUTSCH DT CONNECTOR KITS - BULK PACK OPTION NOW AVAILABLE



PART NO.	DESCRIPTION	PINS	PACK
2DPB	DP Housing	2 Way	100
2DPW	DP Wedge Lock	2 Way	100
2DSB	DS Housing	2 Way	100
2DSW	DS Wedge Lock	2 Way	100
3DPB	DP Housing	3 Way	100
3DPW	DP Wedge Lock	3 Way	100
3DSB	DS Housing	3 Way	100
3DSW	DS Wedge Lock	3 Way	100
4DPB	DP Housing	4 Way	100
4DPW	DP Wedge Lock	4 Way	100
4DSB	DS Housing	4 Way	100
4DSW	DS Wedge Lock	4 Way	100

PART NO.	DESCRIPTION	PINS	PACK
6DPB	DP Housing	6 Way	50
6DPW	DP Wedge Lock	6 Way	50
6DSB	DS Housing	6 Way	50
6DSW	DS Wedge Lock	6 Way	50
8DPB	DP Housing	8 Way	50
8DPW	DP Wedge Lock	8 Way	50
8DSB	DS Housing	8 Way	50
8DSW	DS Wedge Lock	8 Way	50
12DPB	DP Housing	12 Way	50
12DPW	DP Wedge Lock	12 Way	50
12DSB	DS Housing	12 Way	50
12DSW	DS Wedge Lock	12 Way	50

HEAT SHRINK MINI BOXES (BLACK OR RED) ● ●



Flame retardant commercial grade flexible Polyolefin sleeving. Shrink ratio 2:1 - Shrink temperature 80°C

PART NO.	DIA. AS SUPPLIED	MAX SHRINK DIA.	LENGTH
MR2-16	1.6mm	0.8mm	12m
MR2-24	2.4mm	1.2mm	11m
MR2-32	3.2mm	1.6mm	11m
MR2-48	4.8mm	2.4mm	10m
MR2-64	6.4mm	3.2mm	9m
MR2-95	9.5mm	4.8mm	7m
MR2-127	12.7mm	6.4mm	6m
MR2-191	19.1mm	9.5mm	5m
MR2-254	25.4mm	12.7mm	3.5m

PACK OF 10

MICRO 3 FUSES

H.15mm L.14mm



PART NO.	COLOUR	AMPS
MC320	Yellow	20
MC325	Clear	25
MC330	Green	30

PACK OF 1

MEGA FUSES

H.19mm L.69mm



PART NO.	COLOUR	AMPS
MEGA40	Black	40
MEGA60	Black	60
MEGA80	Black	80

SUPERSEAL T-PIECE FOR 2WSS

T2W

3 Way Plug for use with the 2WSS
IP67 Rated
L.50mm W.20mm H.35mm



INTERFACES

PART NO.	DESCRIPTION	CONDUIT
DT82	8 mm 2 Way Interface	2DS/2DP
DT83	8 mm 3 Way Interface	3DS/3DP
DT84	8 mm 4 Way Interface	4DS/4DP
DT86	8 mm 6 Way Interface	6DS/6DP
DT122	12 mm 2 Way Interface	2DS/2DP
DT123	12mm 3 Way Interface	3DS/3DP
DT124	12mm 4 Way Interface	4DS/4DP
DT126	12mm 6 Way Interface	6DS/6DP
DTA82	8mm 2 Way 90° Interface	2DS/2DP
DTA83	8mm 3 Way 90° Interface	3DS/3DP
DTA84	8mm 4 Way 90° Interface	4DS/4DP
DTA86	8mm 6 Way 90° Interface	6DS/6DP
DTA122	12mm 2 Way 90° Interface	2DS/2DP
DTA123	12mm 3 Way 90° Interface	3DS/3DP
DTA124	12mm 4 Way 90° Interface	4DS/4DP
DTA126	12mm 6 Way 90° Interface	6DS/6DP
CC7	Conduit Clip 8mm	GCS7 / GCT7 / GNC8
CC10	Conduit Clip 10mm	GCS10 / GCT10 / GNC12
CC13	Conduit Clip 13mm	GCS13 / GCT13 / GNC16
CC16	Conduit Clip 16mm	GCS16 / GCT16 / GNC20
CC23	Conduit Clip 23mm	GCS23 / GCT23



Harnessflex
SPECIALIST CONDUIT SYSTEMS

7 PIN TO 7 PIN 24V TO 12V ADAPTOR

P7-7

7 Pin Plastic Socket for 'normal' circuits
Converts a 24v pin configuration to 12v pin configuration
(Does not convert the voltage)



TRAILER CONNECTING UNIT 24-12V

TC2412

24v (20-32v) input | 13.8v output RMS 130Hz (with 28v input)
Flasher outputs 2 x 21w
Tail light 2 x 30w
Fog light rear 1 x 42w
Reverse light 1 x 42w
Stop light 1 x 42w
Rated IP65
H.45mm W.110mm L.100mm



MULTI FUNCTION CABLE CUTTER

GT52

Cable range up to 100mm²
Crimp range 0.5mm² - 6mm² & 10mm² - 16mm²
Wire strippers 0.3mm² - 6mm²
Anti - slip serrated blade
Safety lock
L.205mm





PRODUCT UPDATES

01202 870860 | guardianauto.co.uk
MARKET LEADING AUTOMOTIVE ELECTRICAL COMPONENTS

GUARDIAN
automotive